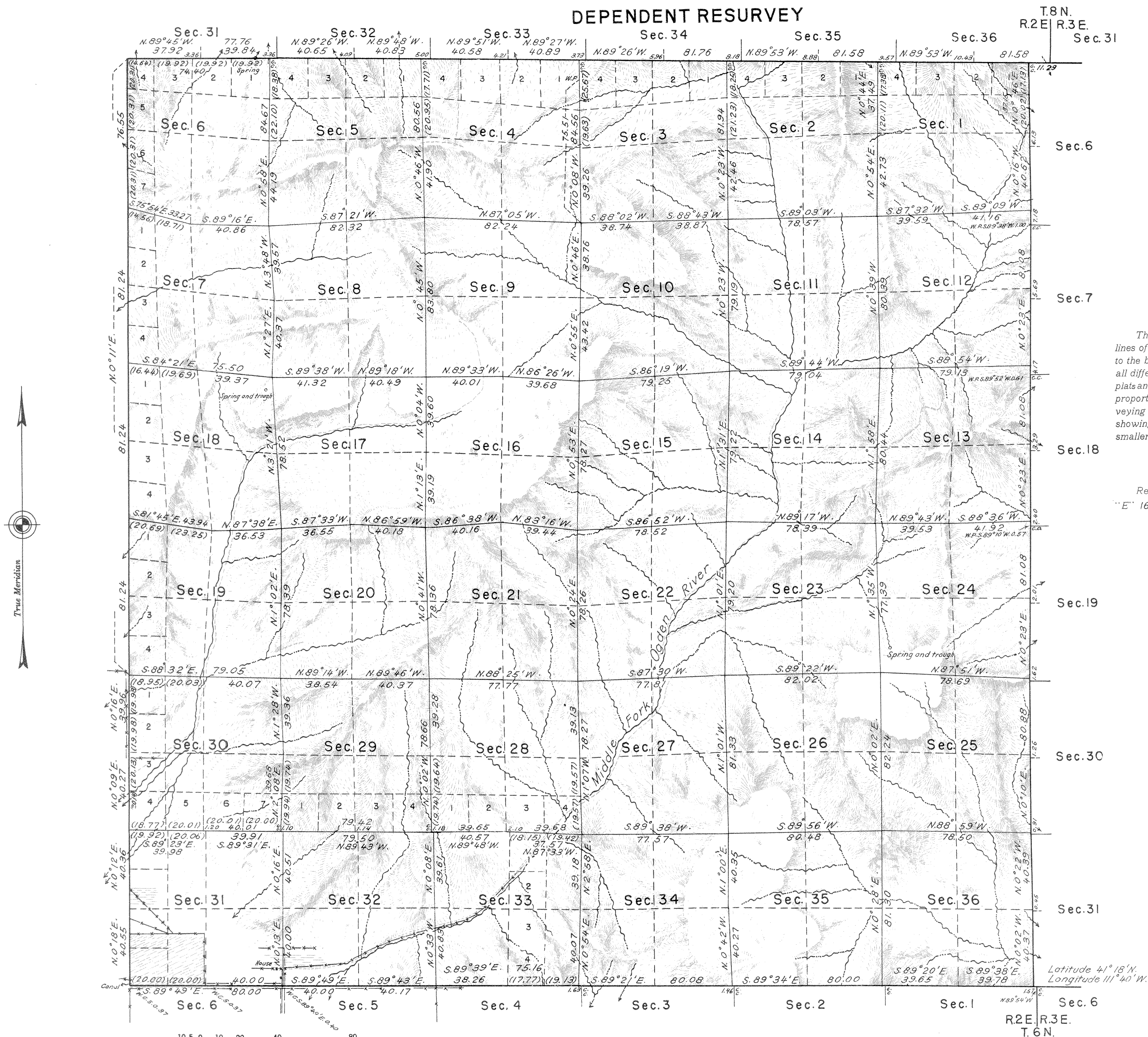


TOWNSHIP NO 7 NORTH, RANGE NO 2 EAST, OF THE SALT LAKE MERIDIAN, UTAH.

DEPENDENT RESURVEY



Memorandum

This plat delineates a retracement and reestablishment of the lines of the original survey in their true original positions according to the best available evidence of the position of the original corners; all differences between the measurements shown on the original plats and those derived in the retracement have been distributed proportionally between accepted corners in accordance with surveying rules; reference will be made to the original plats for the showing of areas and more detailed descriptions of the various smaller subdivisions.

Resurvey authorized by General Land Office Letter "E" 1676465, dated April 21, 1939.

Scale in chains. 10 5 0 10 20 40 80

Mean Magnetic Declination 18°00'E. Area resurveyed: 22768.74 acres.

UNITED STATES DEPARTMENT OF THE INTERIOR
BUREAU OF LAND MANAGEMENT

LINES DESIGNATED	BY WHOM SURVEYED	GROUP NO.	DATE OF SPECIAL INSTRUCTIONS	WHEN SURVEYED	
				BEGUN	COMPLETED
Exterior W.	R. Gentry, W. McConkie & R. Yundt.	306	Oct. 19, 1939	May 21, 1941	Aug 22, 1944
Exterior S.	R. Gentry, W. McConkie			May 24, 1941	May 31, 1941
Exterior E.	W. McConkie			June 10, 1941	June 25, 1941
Exterior N.	W. McConkie, R. Yundt.			June 26, 1941	Aug 7, 1944
Subdivisional	R. Gentry, W. McConkie & R. Yundt.			June 2, 1941	Aug 21, 1944

Denver, Colorado, April 24, 1947

This plat is strictly conformable to the field notes of the survey which have been examined and approved.

[Signature]
Acting Chief Cadastral Engineer.

Washington, D. C., October 2, 1947

The survey represented by this plat, having been correctly executed in accordance with the requirements of law and the regulations of this office, is hereby accepted.

[Signature]
Director.